

Knowledge exchange WUR, Aarhus University & ILVO

ILVO, Merelbeke/Hansbeke, 29 September 2022

ILVO



The logo features a central yellow shape with a dark blue outline, resembling a stylized leaf or gear. Behind it are other abstract shapes: a light blue one, a dark blue one, and a white one with vertical green stripes. The text 'LIVING LAB' is written in a bold, teal, sans-serif font across the top of the yellow shape.

**LIVING
LAB**

AGRO-ECOLOGIE
& BIOLOGISCHE
LANDBOUW

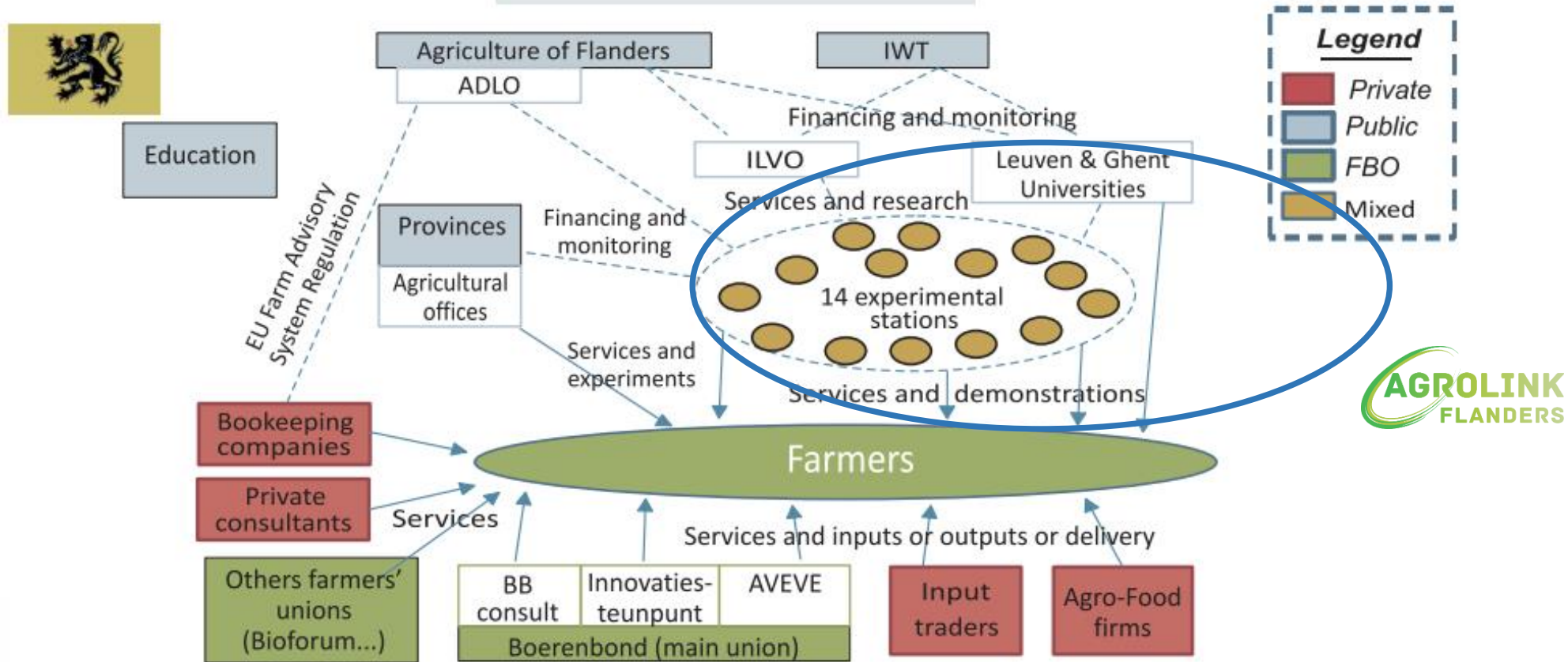
The initiative



Organisation of Agricultural Knowledge and Innovation System in Flanders (AKIS)



AKIS DIAGRAM





AGRO-FOOD-SYSTEM



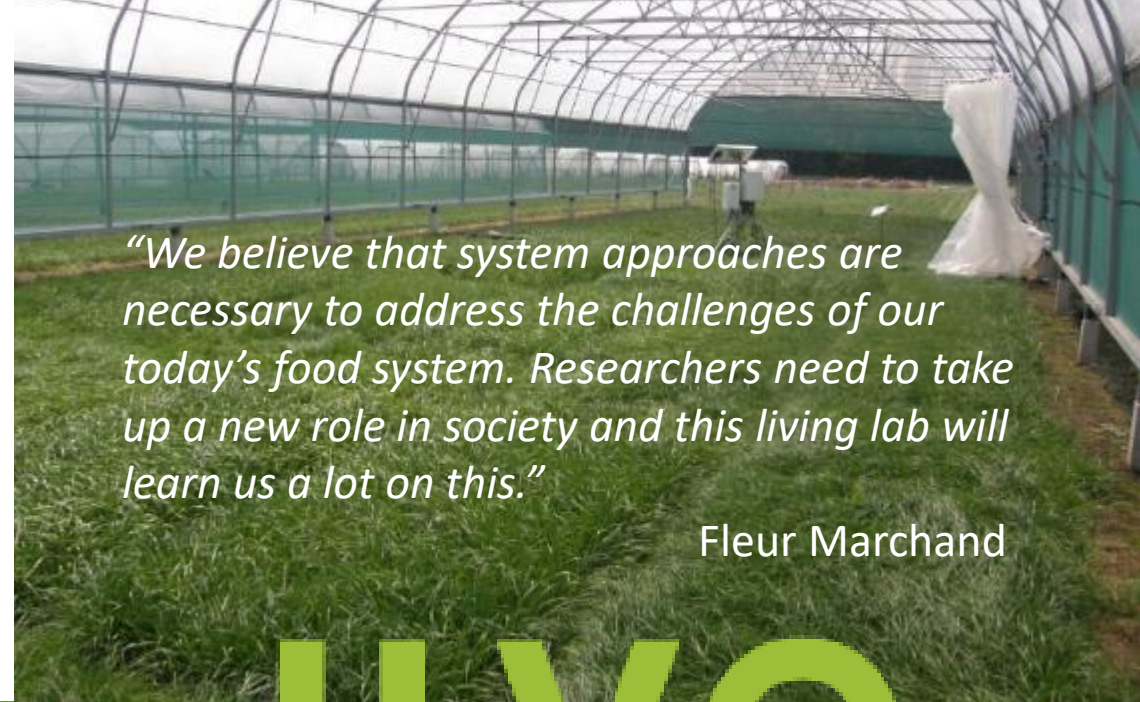


CSA-NETWERK



**'Healthy agriculture for
involved local communities'**

Jasmien Hillen



"We believe that system approaches are necessary to address the challenges of our today's food system. Researchers need to take up a new role in society and this living lab will learn us a lot on this."

Fleur Marchand

ILVO





inagro

ONDERZOEK & ADVIES IN LAND- & TUINBOUW

‘On farm innovation and technical progress are vital drivers in the transition to a more agro-ecological approach’

Dieter Depraetere

ondernemen in
west-vlaanderen





**PAMEL
PROEFCENTRUM
VLAAMS-BRABANT**

Thanks to agro-ecological thinking, we look beyond the optimization of cultivation.



Netwerk Onderzoek Biologische Landbouw & voeding



Based on end-users needs, active stakeholder involvement, co-creation and system thinking are indispensable elements in research, innovation and knowledge creation

Lieve De Cock



CCBT



‘Practice-driven research and tailored knowledge exchange are key for development of agro-ecological innovations with farmers’

Carmen Landuyt



'Open knowledge exchange in co-creation with (organic) farmers as driver for of an agroecological food and farming system'

An Jamart





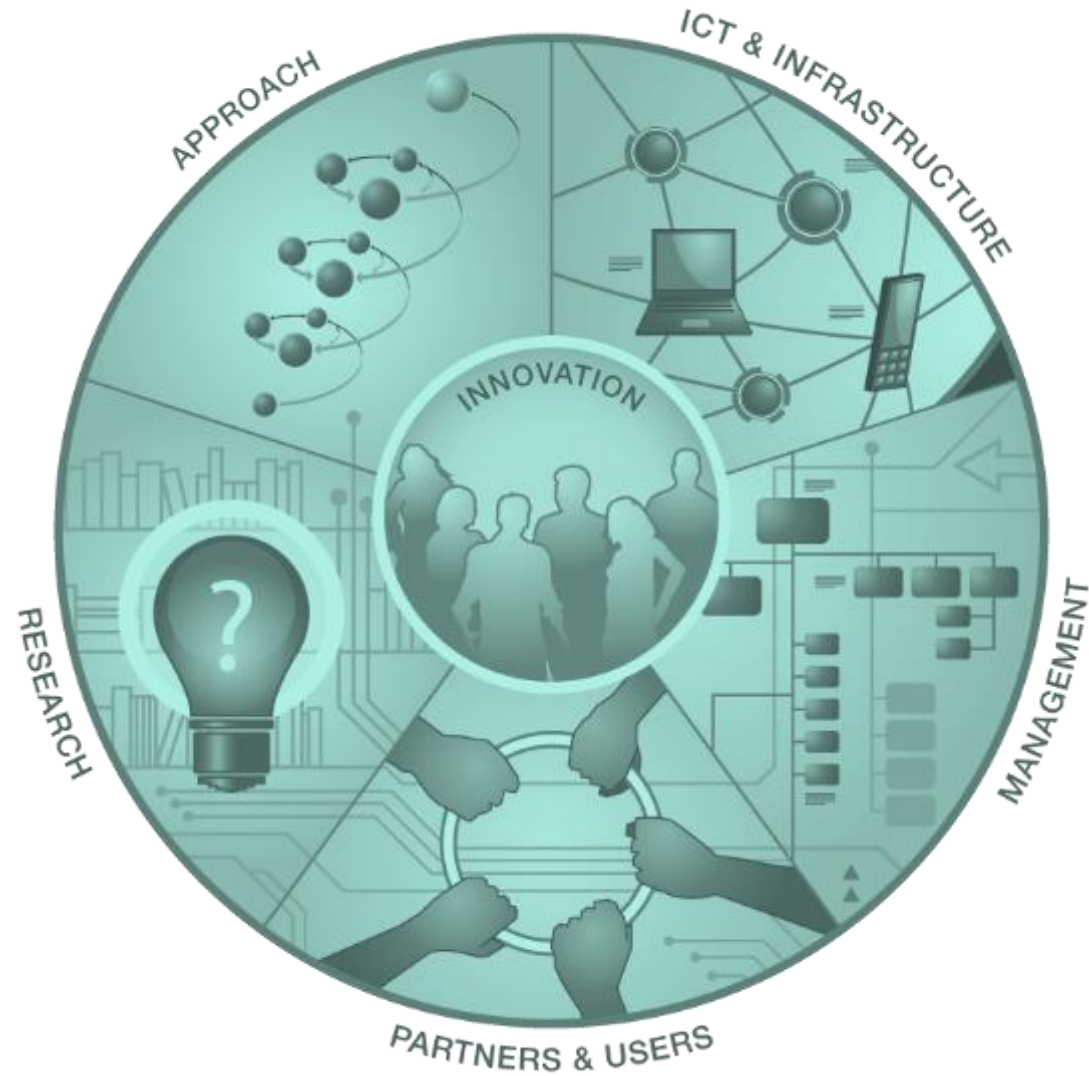
Organic knowledge network of Flanders





LIVING LAB

ENoLL principles
5 components





MANAGEMENT



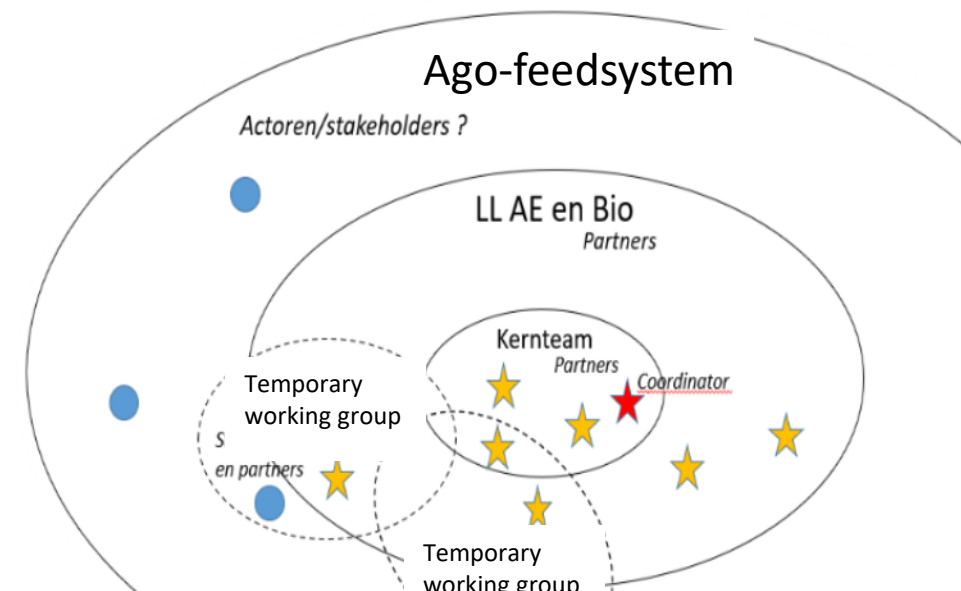
facilitation of the living lab by ILVO

- **management:** 1 FTE from the Social Sciences unit and the aid of 3 researchers
- **core team** with researchers from all units

coordination through participation:

- **active stakeholder participation** in design and operation of the LL
- **working groups:** variable membership, linked to specific goal, temporary

funding : chicken or the egg





Research



Facilitating and supporting systemic research and innovation on agro-ecological practices in food systems

- making existing expertise visible
- interactive knowledge sharing activities
- helpdesk: refer questions to partners, identifying knowledge gaps, education, initiating research with partners
- facilitating project proposals (excl. the writing itself)
- facilitating real life research on farms
- building up knowledge on systemic research

*through innovation
& stakeholder engagement*



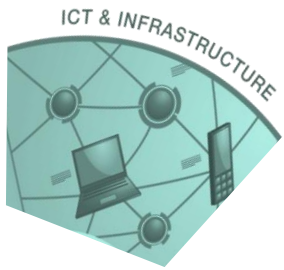
Research



Concrete actions

- Round tables organic research with CCBT
- Price for best organic research with CCBT
- Conferences and webinars
 - *Faire pricing (series)*
 - *Make the soil work for you*
 - *Strategic communication on organic farming*
 - *On-farm composting*
- Inspiring moment for high school teachers on agro-ecology
- Facilitation of the course agro-ecology at UGENT
- Free available presentation about agro-ecology
- Farm visits '*farmer and policymaker in dialogue*'
- Threemonthly networking and inspiring moment '*LLAEBIO draait door*'





ICT and INFRASTRUCTURE



website

www.llaebio.be

farmland for future projects

both on ILVO as on real farms (such as PHAE)





llaebio@ilvo.vlaanderen.be

Flanders Research Institute for
Agriculture, Fisheries and Food
Burg. Van Gansberghelaan 92
9820 Merelbeke – België
T + 32 (0)9 272 25 00
F +32 (0)9 272 25 01

www.ilvo.vlaanderen.be